

TECHNICAL SPECIFICATIONS
HIAB X-DUO 102

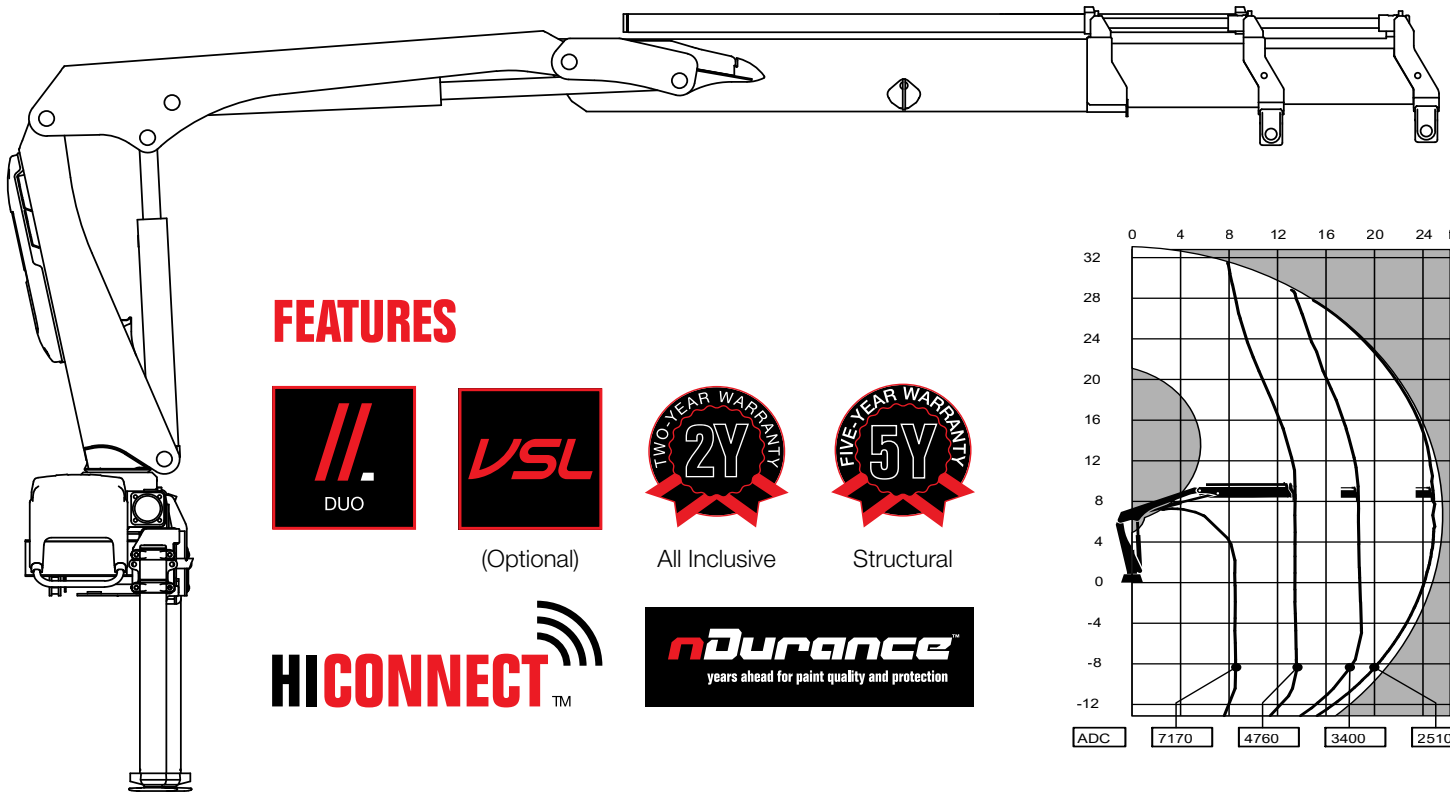


BUILT TO PERFORM



HIAB X-DUO 102 BASIC DATA

| TECHNICAL DATA | X-DUO 102 B-1 | X-DUO 102 B-2 | X-DUO 102 B-3 | X-DUO 102 E-4 | X-DUO 102 E-5 |
|--|--|---|--|---|--|
| Max. lifting capacity (ft-lbs) | 66 350 | 64 180 | 61 210 | 59 770 | 57 520 |
| Outreach, hydraulic extensions (ft) | 19' 0" | 25' 7" | 32' 2" | 39' 8" | 46' 11" |
| Outreach, manual extensions (ft) | 32' 2" | 39' 1" | 39' 1" | 46' 7" | - |
| Outreach / lifting capacity (ft-lbs) | 7' 3" - 8 930 13' 5" - 4 940 18' 8" - 3 570 - - - | 8' 10" - 7 170 13' 5" - 4 760 18' 8" - 3 400 24' 11" - 2 510 - - | 9' 10" - 6 310 13' 9" - 4 450 19' 0" - 3 130 24' 11" - 2 340 31' 2" - 1 850 - | 8' 2" - 7 500 14' 5" - 4 140 19' 8" - 2 870 25' 11" - 2 030 32' 6" - 1 540 39' 4" - 1 280 - | 8' 6" - 6 940 14' 9" - 3 880 20' 0" - 2 600 26' 3" - 1 810 32' 10" - 1 320 39' 8" - 1 040 46' 7" - 860 |
| Slewing angle (°) | 190 - 406 | 190 - 406 | 190 - 406 | 190 - 406 | 190 - 406 |
| Height in folded position (in) | 83 | 83 | 83 | 83 | 83 |
| Width in folded position (in) | 84 | 88 | 90 | 91 | 94 |
| Installation space needed (in) | 32 | 32 | 35 | 33 | 37 |
| Weight, "standard" crane without stabilizers (lbs) | 2 290 | 2 510 | 2 710 | 3 260 | 3 480 |
| Weight, stabilizer equipment (lbs) | 340 - 670 | 340 - 670 | 340 - 670 | 340 - 670 | 340 - 670 |
| Weight, jib (lbs) | - | - | - | - | - |



FEATURES



(Optional)



All Inclusive



Structural



Disclaimer. Hiab cranes have been built to meet the highest standards of safety and service life and have been thoroughly tested. Strength calculations for this model have been carried out in accordance with EN13001 in fatigue class S2. Cargotec's certified Quality Assurance System complies with ISO 9001. Some of the items in our literature may be extra equipment. Certain applications may require an official permit. We reserve the right to change technical specifications without prior notice. Hiab cranes produced for EU-countries are CE marked and comply with the European Standard EN12999.

Hiab is the world's leading provider of on-road load handling equipment. Our high performance product range includes loader cranes, forestry and recycling cranes, demountables, truck mounted forklifts and tail lifts. We aim to set the industry benchmark for customer satisfaction by providing products and services that meet customer needs globally.

www.hiab.us.com
Hiab is part of Cargotec.
www.cargotec.com

Hiab USA Inc
12233 Williams Road
Perrysburg, OH 43551 USA
tel. +419 482 6000
fax. +419 482 6001

